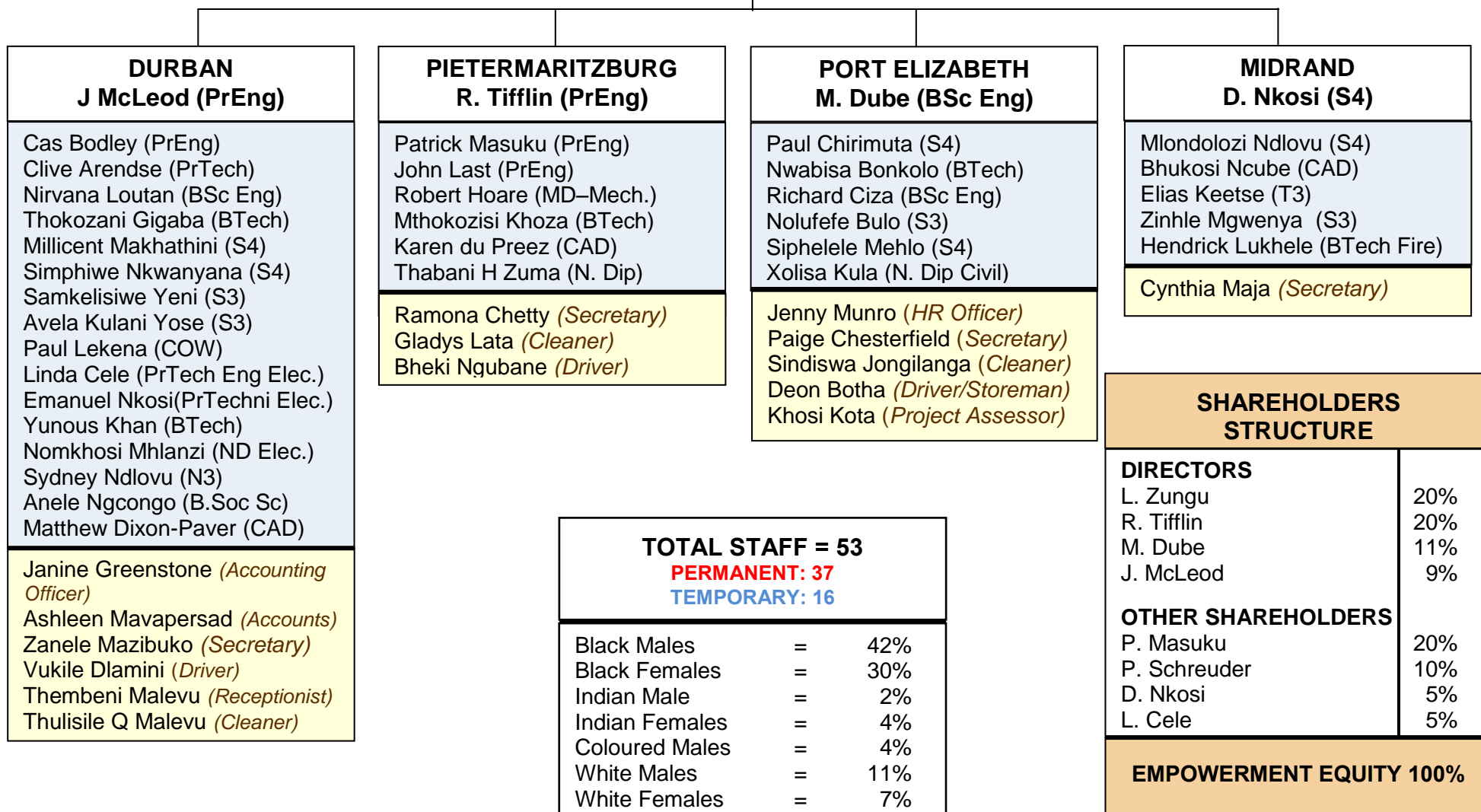


EYETHU ENGINEERS (PTY) LTD

MANAGING DIRECTOR
Linda Zungu (B.Com/S4)



DURBAN J McLeod (PrEng)
Cas Bodley (PrEng) Clive Arendse (PrTech) Nirvana Loutan (BSc Eng) Thokozani Gigaba (BTech) Millicent Makhathini (S4) Simphiwe Nkwanzana (S4) Samkelisiwe Yeni (S3) Avela Kulani Yose (S3) Paul Lekena (COW) Linda Cele (PrTech Eng Elec.) Emanuel Nkosi(PrTechni Elec.) Yunous Khan (BTech) Nomkhosi Mhlanzi (ND Elec.) Sydney Ndlovu (N3) Anele Ngcongo (B.Soc Sc) Matthew Dixon-Paver (CAD)
Janine Greenstone (<i>Accounting Officer</i>) Ashleen Mavapersad (<i>Accounts</i>) Zanele Mazibuko (<i>Secretary</i>) Vukile Dlamini (<i>Driver</i>) Thembeni Malevu (<i>Receptionist</i>) Thulisile Q Malevu (<i>Cleaner</i>)

PIETERMARBURG R. Tifflin (PrEng)
Patrick Masuku (PrEng) John Last (PrEng) Robert Hoare (MD–Mech.) Mthokozisi Khoza (BTech) Karen du Preez (CAD) Thabani H Zuma (N. Dip)
Ramona Chetty (<i>Secretary</i>) Gladys Lata (<i>Cleaner</i>) Bheki Ngubane (<i>Driver</i>)

PORT ELIZABETH M. Dube (BSc Eng)
Paul Chirimuta (S4) Nwabisa Bonkolo (BTech) Richard Ciza (BSc Eng) Nolufefe Bulu (S3) Sipelele Mehlo (S4) Xolisa Kula (N. Dip Civil)
Jenny Munro (<i>HR Officer</i>) Paige Chesterfield (<i>Secretary</i>) Sindiswa Jongilanga (<i>Cleaner</i>) Deon Botha (<i>Driver/Storeman</i>) Khosi Kota (<i>Project Assessor</i>)

MIDRAND D. Nkosi (S4)
Mlondolozu Ndlovu (S4) Bhukosi Ncube (CAD) Elias Keetse (T3) Zinhle Mgwanya (S3) Hendrick Lukhele (BTech Fire)
Cynthia Maja (<i>Secretary</i>)

TOTAL STAFF = 53		
PERMANENT: 37		
TEMPORARY: 16		
Black Males	=	42%
Black Females	=	30%
Indian Male	=	2%
Indian Females	=	4%
Coloured Males	=	4%
White Males	=	11%
White Females	=	7%

SHAREHOLDERS STRUCTURE	
DIRECTORS	
L. Zungu	20%
R. Tifflin	20%
M. Dube	11%
J. McLeod	9%
OTHER SHAREHOLDERS	
P. Masuku	20%
P. Schreuder	10%
D. Nkosi	5%
L. Cele	5%
EMPOWERMENT EQUITY 100%	